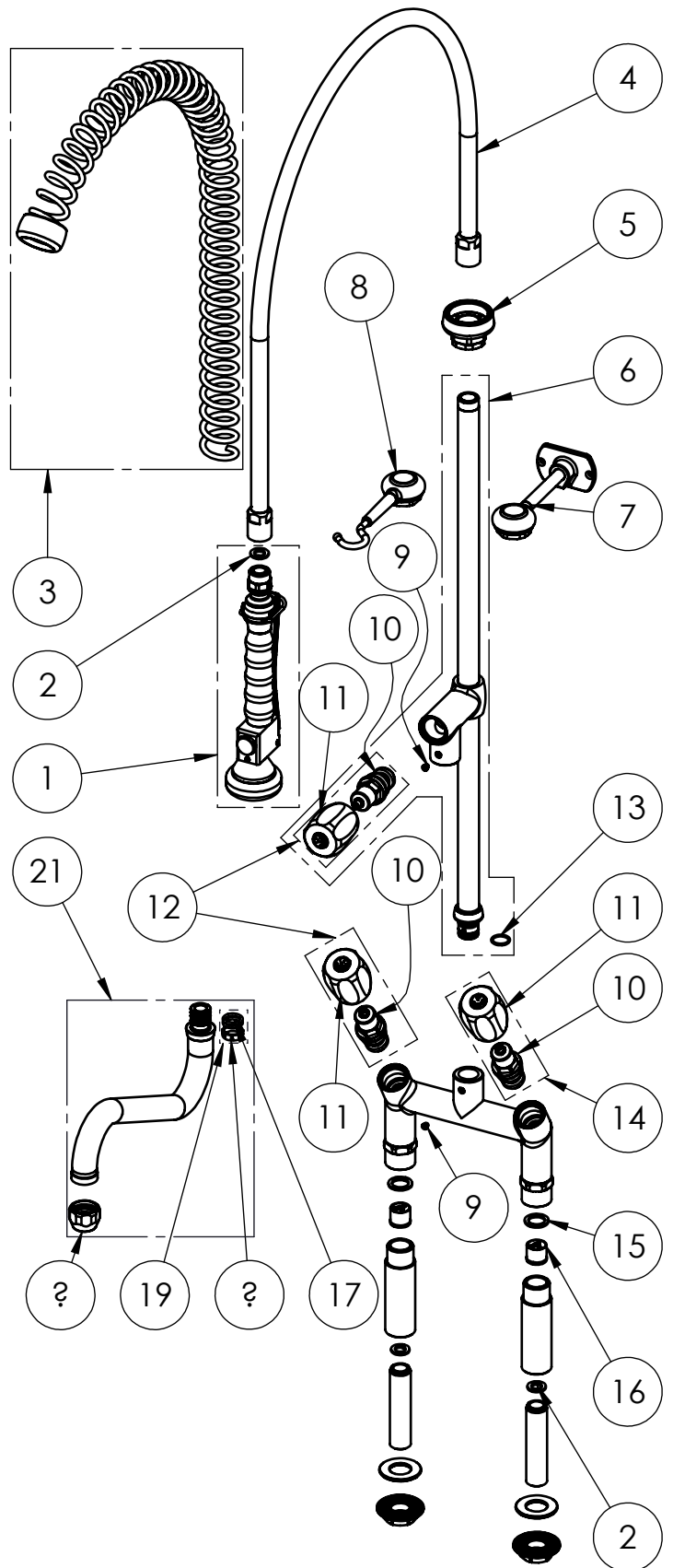


Rough-In Requirement:  
23mm Mounting Hole

<b>TITLE / DESCRIZIONE</b> Elevated double-hole (155mm center distance) slanted, mixing temperature, deck mount Pre-Rinse Unit with 100mm risers, riser add-on faucet with 250mm swivel nozzle (Ø 25mm). 80mm-long mounting shanks, G1/2" male inlets with check valves, G3/4" high flow compression headworks, riser tube - stainless steel, brass, chrome plated. 16L/min KLARCO "NEW" spray valve.	DRN / DIS	CHD / VER	APPR
	SCALE / SCALA 1:10	DATE / DATA 03/03/2020	SHEET / PAG 1 of 2
	NUMBER / CODICE DIS.	MODEL / PRODOTTO <b>3E.3016.S3.11</b>	

ITEM NO.	SALES NO.	DESCRIPTION
1	P020	SPRAY VALVE "NEW " BLACK
2	P074	FLAT GASKET 1/2" Ø18,5x11 sp.2mm
3	P005	OVERHEAD SPRING "GREY"
4	P004	100cm Ø17 F1/2"xF1/2" FLEXIBLE HOSE
5	P007	SPRING CHROMED SUPPORT
6	P217/11	650mm G1/2" RISER W.ADD ON TAP,HANLDE, HEADWORK AND O-RING
7	P034	115mm WALL BRACKETCHROMED
8	P035	SPRAY VALVE CHROMED SUPPORT
9	P236	SPOUT SCREW (short)
10	V010	3/4" HEADWORK
11	H001/color	"EUROP" HANDLE W. COLOR CODED INDEX (specify the color B or R)
12	V011/R	COMPLETE HANDLE W.RED CODED INDEX +HEADWORK KIT
13	P076	O-RING 2062 (Ø15.6x1.78), EPDM 70 PEROX
14	V011/B	COMPLETE HANDLE W.BLUE CODED INDEX +HEADWORK KIT
15	P107	FLAT GASKET 3/4" Ø24x17sp.2mm
16	P031	BACKFLOW PREVENTER DW20-DN15
17	P072	O-Ring 119 (Ø 15,08 x 2,62mm) EPDM 70
18	P592	SWIVEL SLEEVE
19	P613	#2 OR+#1 SWIVEL SLEEVE KIT FOR FAUCET/OUTLET
20	P014	STREAM REGULATOR OUTLET (Ø25 SPOUT)
21	COS3	SWING NOZZLE Ø25x250 h.60
87		Tubo inox gruppi doccia RST EUROP-STYL COMPLETO



TITLE / DESCRIZIONE  
Elevated double-hole (155mm center distance) slanted, mixing temperature, deck mount Pre-Rinse Unit with 100mm risers, riser add-on faucet with 250mm swivel nozzle (Ø 25mm). 80mm-long mounting shanks, G1/2" male inlets with check valves, G3/4" high flow compression headworks, riser tube - stainless steel, brass, chrome plated. 16L/min KLARCO "NEW" spray valve.

DRN / DIS

CHD / VER

APPR

SCALE / SCALA 1:7

DATE / DATA 03/03/2020

SHEET / PAG 2 of 2

NUMBER / CODICE DIS.

MODEL / PRODOTTO  
3E.3016.S3.11

A4V